

# Inland Geological Society

October 2014

Newsletter of the Inland Geological Society

Volume 30 No. 10

## *This Meeting:*

Wednesday,  
October 1st

### Time:

Social: 6:00pm  
Dinner: 7:00pm  
Lecture: 7:30pm

### Location:

LSA Associates  
1500 Iowa Ave  
Suite 200  
Riverside, CA  
92507  
(Map on Pg. 4)

### Coming to Dinner?

### Please RSVP:

By Monday 9/29  
(951) 784-2168  
dixie.lass@att.net

## **In this Issue:**

- October Speaker – Tony Morgan ..... 1-2
- Upcoming Events/IGS Meeting Schedule..... 3
- Current IGS Officers ..... 3
- **LSA MEETING LOCATION MAP** ..... 4

## *October Speaker:*

### **Tony Morgan, PG, CHG**

Deputy General Manager / Groundwater & Water Resources  
United Water Conservation District

## ***Surface and Borehole Geophysics as Tools for Groundwater Resource Management— Recent Experiences for Ventura County***

### *Abstract*

United Water Conservation District has used surface geophysical techniques (e.g., seismic reflection, time domain electromagnetics, borehole geophysics) to refine and update the understanding of the hydrogeological setting of several groundwater basins in Ventura County. The District has recently employed high-resolution seismic reflection techniques to explore the subsurface on the south-central Oxnard Plain and has initiated an extensive time domain electromagnetic (TDEM) survey program. The TDEM domain program was used to evaluate the areal extent of sea water intrusion on the South Oxnard Plain and provide additional information on subsurface conditions that may impact groundwater movement within the Oxnard Plain Forebay basin. Ongoing TDEM surveys target the more complicated geology associated with the Santa Paula-Mound-Forebay basin boundary area, as well as the Forebay-Oxnard Plain

*(Continued on page 2)*

(Continued from page 1)

and Mound-Forebay basin boundaries. The hydrostratigraphic conceptual model for the Oxnard Plain region has been revisited by locating, digitizing, and correlating several hundred borehole geophysical logs. These logs are a part of an in-house library that also contains driller's logs, water quality data, and surface geophysical data.

#### BIOGRAPHY:



Tony Morgan (PG, CHG) holds graduate and undergraduate degrees in Geology from Indiana University and has been with UWCD since 2009; prior to that he was Western Region Manager for Layne Geosciences. During his career he has directed water-supply development programs including groundwater exploration, surface and borehole geophysical survey projects, well design and rehabilitation tasks, as well as Aquifer Storage and Recovery facility siting studies for municipal, industrial, and agricultural interests throughout the western U.S.

The UWCD Groundwater Department is responsible for providing hydrogeological expertise to assist the District in managing groundwater resources in eight basins. The department operates an extensive hydrologic data collection system that includes water level measurements (~400 wells), water quality sampling and analysis (~160 wells), and stream gauging on the Santa Clara River and associated tributaries. The department also maintains and updates the regional groundwater flow model, performs field investigations (e.g., surface geophysical surveys) to improve the District's understanding of the controls on groundwater flow, evaluates the impacts of groundwater utilization and conservation options on resource availability and serves as an in-house and County-wide resource on groundwater supply, water quality, and water resource management. Since 2008 Tony Morgan has served as a Director on the Board of the *American Ground Water Trust* and has been the President of the *Groundwater Resources Association of CA - Central Coast Branch* since 2011.

### Speakers Wanted

**We are still looking for more speakers for future meetings.**

**Students of all levels are encouraged to participate!**

**Contact Jeff Fitzsimmons or Steve Mains to get your name on the schedule.**

## Upcoming Meetings/Events

### Rock & Gem Shows—Various locations

Various rock and mineral shows will be throughout So. California. To find one near you, visit [www.rockngem.com/showdates.asp](http://www.rockngem.com/showdates.asp)

### AEG—So. California Chapter Meeting



The meeting details for the next meeting for the AEG-Southern California Chapter is to be announced. For more info., visit the So. California Chapter at [www.aegsc.org/calendar/](http://www.aegsc.org/calendar/).

### AEG—Inland Empire Section

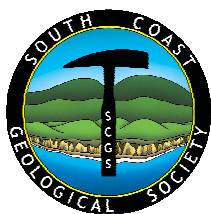


Ron Lin, Writer for the Los Angeles Times, will be giving a talk titled "Fly over the Hollywood Fault Zone" at the next AEG—Inland Empire Section on **October 15, 2014**.

For more info., visit

[www.aegsc.org/chapters/inlandempire/index.php](http://www.aegsc.org/chapters/inlandempire/index.php).

### South Coast Geological Society Trip



South Coast Geological Society is offering a field trip on **October 3-5, 2014**. The trip is titled "Regional Geology of the White and Inyo Mountains" to explore the paleontological and

tectonic development of the area. For more info., contact Alexander "Sandy" Jack at [AJack\\_gss@msn.com](mailto:AJack_gss@msn.com) or visit their website at [www.southcoastgeo.org](http://www.southcoastgeo.org).

### Los Angeles Basin Geological Society



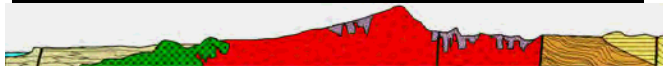
LABGS generally has their meetings on the fourth Thursday of each month. Visit their website for more info. ([www.labgs.org](http://www.labgs.org)).

### San Diego Assoc. of Geologists Field Trip



SDAG will be offering a field trip on **October 10-12, 2014**. The title of the field trip is "Traversing a Transform Boundary: Regional Tectonics, San Diego through the Salton Trough". For more info, visit [www.sandiegoeologists.org](http://www.sandiegoeologists.org)

### San Diego Assoc. of Geologists Meeting



Vic Camp will be presenting a talk on "Mid-Miocene Flood-Basalt Volcanism in the Columbia River Province, Mantle Upwelling and Basin and Range Extension" on **Wednesday, November 19, 2014**. For more info, visit [www.sandiegoeologists.org](http://www.sandiegoeologists.org)

### GRA 23rd Annual Conference and Meeting

Groundwater Resources Association of California will be holding their 23rd Annual Conference and Meeting, titled "2014—A Year of Groundwater" on **Oct. 15-16, 2014** in Sacramento, CA. They are currently calling for abstracts. For more info, visit [www.grac.org/bsarc14.asp](http://www.grac.org/bsarc14.asp)

## IGS Meeting Schedule

### **November 5, 2014 (Wednesday)**

Shawn Morris, Cal Poly Pomona, Grad. Student  
*Costa Rica Earthquake Rapid Response*

### **December 4, 2014 (Thursday)**

Taylor Waters, PG, Earth Forensics, Inc.  
*A Career in Environmental Science—From 1985 to 2014*

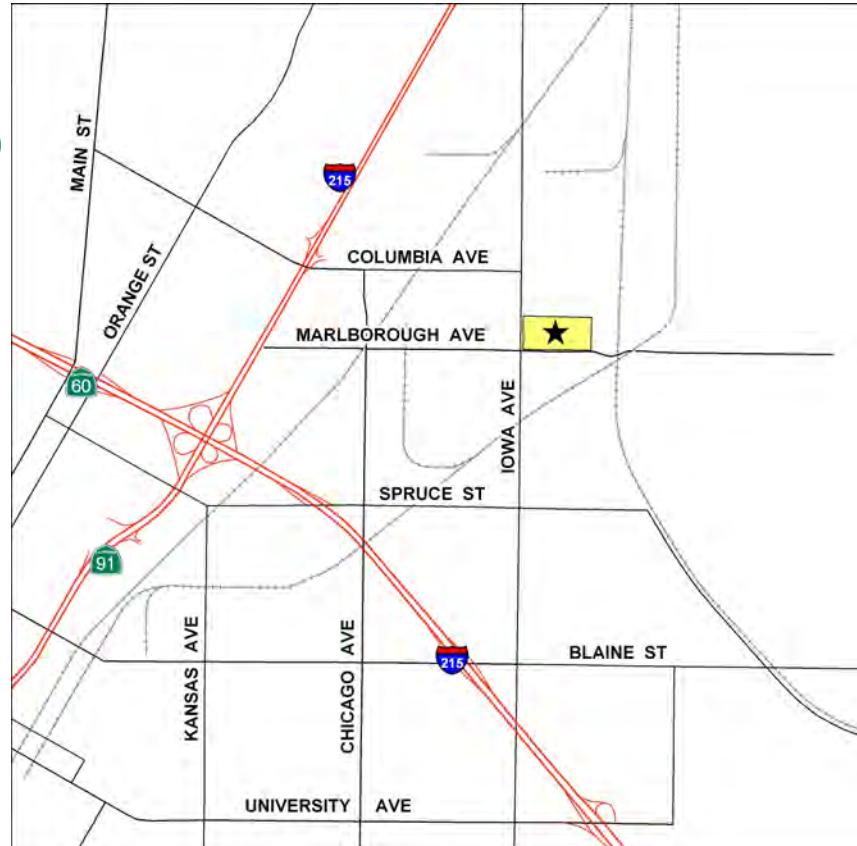
### **January 7, 2015 (Wednesday)**

TBA



**IGS MEETING LOCATION:**

**LSA Associates, Inc.**  
**1500 Iowa Ave, Suite 200**  
**Riverside, CA 92507**

**2014 IGS OFFICERS****Co-President**

Greg Johnson, LADPW  
 gjohnson@dpw.lacounty.gov  
 626.458.1741

**Co-President**

Rob Johnson, AMEC  
 rob.b.johnson@amec.com  
 951.369.8060

**Co-Vice President**

Jeff Fitzsimmons, John R. Byerly, Inc.  
 geojeff08@att.net  
 909.877.1324

**Co-Vice President**

Debbie Kunath, Consulting Geologist  
 Debbie\_Kunath@ymail.com  
 760.885.0232

**Treasurer**

Margaret Gooding, LSA Associates  
 Margaret.gooding@lsa-assoc.com  
 951.781.9310 x279

**Secretary**

Dixie Lass, Retired  
 Dixie.lass@att.net  
 951.784.2168

**Membership**

Steven E. Mains, Watermaster  
 Support Services  
 watermains@aol.com  
 951.780.5636

**Newsletter Editor**

Shelby Barker, AECOM  
 shelby.barker@aecom.com  
 760.680.0389

**Web Mistress**

Marina West, Bighorn Desert View  
 Water Agency  
 wells.out.west@gmail.com  
 760.910.3264

**Web Master**

Ernie Roumelis, AKW Geotechnical  
 eroumelis@verizon.net  
 951.265.9849